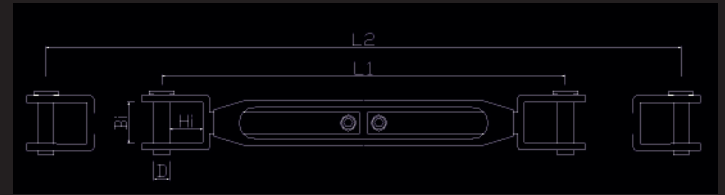


GABEL/GABEL

Wantenspanner

Terminals, Gabeln und Toggles bestehen aus V4A. Gewindehülsen sind aus hochfester, Seewasser beständiger Bronze gefertigt. Für hohe Lasten sind Bolzen auch aus hochfestem 17-4 Stahl lieferbar.

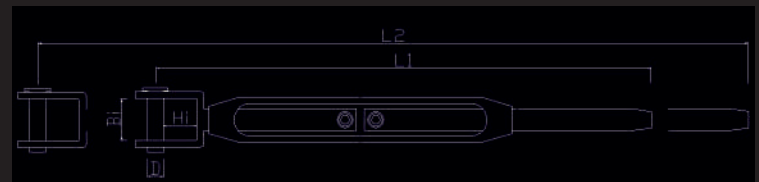


Product	G. UNF	L1	L2	BI	HI	D	BL	MWL	Weight	Ø Wire
6TT017166	7/16"	225 mm	310 mm	15 mm	22 mm	11 mm	4050 daN	2020 daN	350 g	max. 6 mm
6TT011207	7/16"	235 mm	335 mm	15 mm	22 mm	13 mm	4050 daN	2800 daN	585 g	max. 7 mm
6TT015808	5/8"	270 mm	380 mm	20 mm	24 mm	14 mm	8840 daN	4424 daN	1035 g	max. 8 mm
6TT015810	5/8"	295 mm	405 mm	20 mm	26 mm	16 mm	8840 daN	4424 daN	1035 g	max. 10 mm
6TT013410	3/4"	330 mm	460 mm	22 mm	28 mm	16 mm	13000 daN	6500 daN	1810 g	max. 10 mm
6TT013412	3/4"	330 mm	460 mm	26 mm	28 mm	19 mm	13000 daN	6500 daN	2050 g	max. 12 mm

Our turnbuckle threads are made of seawater resistant marine bronze with terminals made of stainless steel equivalent to AISI 316. All Parts are milled, machined or ground from solid material. No castings are used.

GABEL/TERMINAL

Wantenspanner



Product	G. UNF	L1	L2	BI	HI	D	BL	MWL	Weight	Ø Wire
6TT027166	7/16"	255 mm	350 mm	15 mm	22 mm	11 mm	4050 daN	2020 daN	325 g	max 6 mm
6TT021207	1/2"	300 mm	400 mm	15 mm	22 mm	13 mm	5600 daN	2800 daN	610 g	max 7 mm
6TT021208	1/2"	310 mm	410 mm	16 mm	22 mm	13 mm	5600 daN	2800 daN	640 g	max 8 mm
6TT025808	5/8"	340 mm	450 mm	20 mm	22 mm	14 mm	7780 daN	3890 daN	1000 g	max 8 mm
6TT025810	5/8"	360 mm	470 mm	20 mm	22 mm	16 mm	8840 daN	4424 daN	1145 g	max 10 mm
6TT023410	3/4"	400 mm	540 mm	22 mm	22 mm	16 mm	9500 daN	4750 daN	1600 g	max 10 mm
6TT023412	3/4"	435 mm	575 mm	26 mm	22 mm	19 mm	13000 daN	6500 daN	2230 g	max 12 mm